

		<p style="text-align: center;"><b>April, 2014</b></p>
---	--	---

**April Meeting - In Brief** submitted by Bill Bulloch

We had 31 members and a whopping 11 guests at our April Meeting. One of the guests, Kim Helms joined the Club.

Since we did not have a Wood Raffle to allow more time for the Jimmy Clewes demonstration, the Red Bowl was brought out to collect voluntary donations to support the demonstration fund. We collected \$60.00 in donations.

The results of our Fundraiser Raffle were announced. The selling of tickets was not intended to be a contest. We only asked everyone to do what they were comfortable doing. However, we still want to recognize Fred Morris, Bennie Evans and Debbie Adamson for their outstanding effort. These three sold approximately 25% of our tickets. Thanks everyone for your contributions.

At a pre meeting ceremony held at Slices Pizza attended by about 20 of our members and friends, we awarded Debbie Adamson a plaque recognizing her contributions and support to our Club. Thank you, Debbie.

The First Quarter Treasurer's Report was presented to the membership.

At our First Quarter Board meeting the Board approved a \$125.00 quarterly allocation for the Club Library. The Library Committee will be making the DVD selections. If anyone has a suggestion for DVDs contact Ron Biffle or one of the other committee members.

The results of our First Quarter Participation Reward Program were announced. We had a three-way tie for first place: Chip Nasworthy, Ronny Yates and Don Yost tied with 22 participation points. These three drew for the top prize package valued at \$60.00 donated by The Wood Yard in Griffin. Don Yost was the winner with Chip and Ronny receiving a \$10 Gift Certificate from Craft Supply. Also, worth mentioning is that Steve Mellott, Joe Patterson and Rocky Davis tied for second place with a total of 21 points. Sorry, there was no second place prize.

## April Demo submitted by Larry Parks

Jimmy Clewes was our demonstrator this month and what a great demonstration it was. Jimmy turns fast, speaks fast and shares helpful hints in such rapid volume that I found it impossible to write it all down. I had to stop taking notes and just try to absorb all I could and hope that I could remember some of it for the newsletter

On Jimmy's web site under "About Jimmy," you will find this quote. "Jimmy is not your ordinary woodturner. Upon a first meeting one would think of him as a renegade, a free thinker and not within the stereotypical image of a woodturner. His charming British style, unending wit, creative mind and magnetic personality are only some of the attributes that make him popular in the woodturning demonstration circuit." This was exactly what we got.



Jimmy began with a message to us turners who might be concerned that our techniques are not as good as those of others ...it does not matter. Turn your way. If you want to scrape rather than cut then do it. What matters is the end result. Whatever works for you is the way you should turn. The objective is to have fun using the techniques that you like.

Jimmy emphasized using your body to control the cut rather than arm movement. He talked about stance at the lathe with right foot forward to make pull cuts. Jimmy prefers pull cuts to push cuts. When sharpening his bowl gouge, he uses a sharpening jig and changes the standard angle of the jig foot to give him a soft curve on the wings of the gouge. When cutting with the gouge he only uses 1/8 to 1/4 of the wing edge. In between grinding Jimmy hones the gouge to keep it sharp throughout the turning. He always hones the gouge before the finish cut.

Jimmy demonstrated his method of turning a bowl. The blank is mounted on a screw chuck. Once the blank is rounded, Jimmy turns the lathe speed up high: 2500 to 3000rpm. He stressed however that we should turn at the speed at which we are comfortable. He likes to shape the bowl so that the base of the bowl visually flows toward the center of the foot. Jimmy does not like to turn bowls with a very thin side. He said that these thin bowls might show the skill of the woodturner to other woodturners but they don't sell well. He prefers for the bowl rim to be substantial. Jimmy also does not like to leave the top edge of the bowl flat. He rounds the top edge to flow better visually. When removing wood from the inside of the bowl he does not cut out the center first. Cutting out the center first risks movement and flexing of the bowl. Jimmy said that he never roughs out a bowl and then sets it aside to dry. He turns wet wood to his final design and then uses an oil finish. He does not worry about the bowl

warping later. His thought is that we have been conditioned to think that all bowls should be round and he asked the question: “what is wrong with an oval bowl?”

Lastly, Jimmy demonstrated the turning of an oriental box (or some may call it a lidded bowl) with square edge box and a square edge lid. His technique on this box was similar to his technique for the bowl except that he did use a push cut to cut the square edges.

I will have to say that the Jimmy Clewes demo was my favorite so far this year.

**May Meeting** submitted by Bill Bulloch



Our May meeting will feature **Mike Peace** demonstrating Texturing and Chatter Work.

Mike has been turning for about seven years and enjoys every aspect of it. He is a member of the American Association of Woodturners and active in three woodturning chapters in the Atlanta area, serving as President of one and serving on the Board of Directors for another. Mike enjoys teaching and demonstrating woodturning. He has published a number of articles in ***American Woodturner*** and ***Woodturning Design***. He also participates regularly in a number of on-line woodturning forums.

Mike Peace lives in Suwanee, GA with his wife Barbara. Before he retired, Mike worked at ADP as a payroll software project manager. After a couple of years of active duty, he continued serving in the US Army Reserve retiring with the rank of Lieutenant Colonel.

More information on his woodturning can be found at his homepage  
<http://mikepeacewoodturning.blogspot.com/>

## Turning Exchange submitted by Bill Bulloch

At our May meeting we will have our first Turning Exchange for the year. We would like everyone to participate in this. The Turning Exchange gives us the opportunity to collect the work of other members. To participate, you will bring a piece of your work in an unmarked package to the meeting. Each participant will be given a ticket. When your number is drawn you will pick a package from the table. What to bring? Well, it should be something that represents your style. If you turn mostly bowls, then a bowl would be a good choice. If you turn ornaments, then ornaments would be a good choice. If you are a beginner, all the better, we can track your progress over time. Down the road, we can look back at your work and say look how old so and so has grown -- who would have thought?



The Wood Yard  
1516 A-1 Kalamazoo Drive  
Griffin, GA 30224  
770-468-8588  
[www.thewoodyard.com](http://www.thewoodyard.com)

Hardwood Lumber and finishing supplies  
***The Wood Yard sponsors our Membership Participation Rewards Program by providing the Quarterly and Annual rewards to the members with the most participation points.***

The Wood Yard is moving and has a new Website to boot. Here is the announcement from Rick Wood:

Moving day - We will be moving next week and hopefully not the next week and not the next week. We are going to stay open in Griffin until the latter part of the week so feel free to stop by and see us. The new address is 122 Main Street, Concord, GA 30206, Telephone: 770-468-8588. Google will bring up a map to Concord and I am sure you won't have trouble finding us, as Concord is a small town. We are near the town gazebo that sits out along Highway 18 which runs right through town. Call me if you need directions.

New web site - We launched the new web site Wednesday night. I am sure there will be some issues to iron out but so far so good. The site includes 3 forums -- one for general discussion. Here you can post woodworking related questions or announcements for your club or organization. If we can't answer the questions somebody smarter than us will. Another will be for posting pictures of some of your work. Don't be shy; we all enjoy looking at others projects. And the last one will be for you buy/sell/swap used tools and equipment. You will need to sign up and get a user name and password.

**Ask Don** submitted by Don Yost

Harry Hardwood asks – If I want to sell my work, how do I price it?

I have been told many times that it depends on where you sell it.

My solution is to multiply the diameter times the height and add \$25. Of course you must add for any extra work.

This works well for bowls. For other work, you may want to ask someone who sells other types of work.

It also depends upon whether you have to pay a commission.

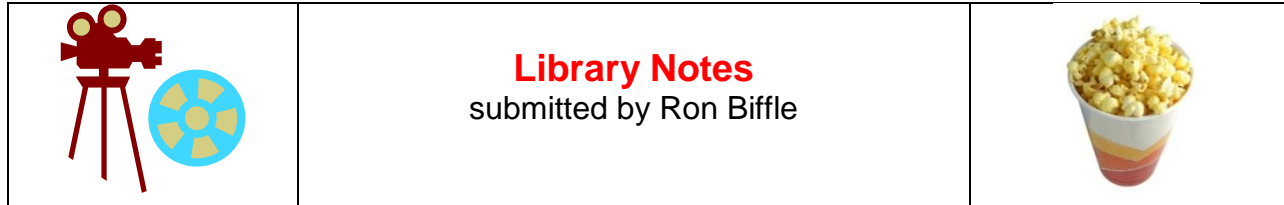
Sent from my wood pile - Don

If you have a question about woodturning, you can submit it to Don at the following email address: [dkyost40@yahoo.com](mailto:dkyost40@yahoo.com)

**Bluebird and Bluegrass Festival** submitted by Bill Bulloch

We had a good time at the Bluebird and Bluegrass Festival this past Saturday. The Club had three booths displaying and selling our woodturnings and two lathes for demonstrating. Joe Patterson, Lee Dale, Chip Nasworthy, Steve Mellott and Bill Bulloch were there representing the Club. We talked and handed out our club business cards to quite a few people who expressed an interest in what we do. The Bluebird and Bluegrass Festival is an annual event at Dauset Trails Nature Center in Jackson. Dauset Trails Nature Center is a private, nonprofit organization whose mission is to provide quality environmental education, outdoor recreation and an understanding of early farm life through close and intimate contact with Georgia's preserved flora and fauna.





Your library committee has begun a time consuming task of previewing our collection of over 140+ DVDs for the purpose of determining which DVDs are in good useable condition and which DVDs need to be replaced (where possible) or discarded. We continue to need more space as we have donations and demonstration DVDs becoming available to us. This will take some time as each disk must be played in its entirety to make sure it is good. After checking all the DVDs, we hope to better organize the library as well. Continue to make us aware of problems that you discover.

President Bill has made a call for the donation of any printed materials that members would like to donate and we will be glad to catalog those and make them available to the membership. If you have material you would like to donate, just bring those to Ron Biffle or any of the committee members and we will process those asap.

Please remember the simple instructions for checking out or checking in a DVD are posted on the inside of the cabinet doors. Please help us keep track of these valuable materials by following these simple procedures and please use the library.....it belongs to all of us and there is a wealth of education and inspiration in those disks!

Our Board of Directors has voted to make funds available on a quarterly basis to allow us to purchase new DVDs to enhance our collection. If you know of DVDs that you would like to have considered, please let any committee member know. Our Library Committee members are Ron Biffle, Lee Dale, Dick Hyatt, Charles Jackson and Gary Kostik.

### **Club Websites** submitted by Bill Bulloch

The AAW's new website provides space for each Chapter to have their own Group Website. I set ours up at: <http://www.woodturner.org/members/group.aspx?id=129766>. I would like everyone to visit it, join the group, make comments, add pictures and blog if you like. Our club site at [www.barnesvillewoodturners.com](http://www.barnesvillewoodturners.com) will remain our "Go To" website for official club information and updates. You should visit there often. The two websites will provide the Club with exposure from different search engines. I would like to expand this exposure even more with a Facebook Group account. Does anyone want to set that up and maintain it for us? Volunteer needed.

## **Eye Protection** submitted by Steve Mellott

**Have you ever wondered what it would be like to be blind?** Woodworkers can be exposed to chemicals, dyes, dust, splinters, broken tools, flying nails and many other items that could cause major eye damage. The next time you work on a project, please remember to wear proper eye protection. This might include safety glasses, goggles or a full face shield depending upon the project. In some cases, it might include a combination of equipment. Be Safe!



## **Saturday Workshop** submitted by: Bill Bulloch

Our Saturday Workshop was held on March 15. There were ten members and one guest in attendance. We talked about ways to mount our work on the lathe. Bill opened the workshop by showing various chucking methods including different jaws for the chuck; jam chucks, eccentric chucks, collet chucks and mandrels. Rick Ruark presented a different style of collet chuck and the special mandrel he uses for mounting game calls on the lathe. Steve Mellott showed us a chucking method for hollow forms. Ron Biffle showed us a quick change drive center with extra strong holding power that he uses on his natural edge turnings and Lee Dale offered more in the line of jam chucks. We all had a great time. Mel Williams brought Moon Pies for everyone, but no RC Cola.

## **New Members** submitted by: Bill Bulloch

We would like to welcome several new members to the club.

**Larry Smith:** Larry is from Flovilla, Ga. He has no turning experience but wants to learn. You might recognize Larry from his role as a State Representative for our district.

**Kim Helms:** Kim joined the Club under the Family Plan with his father **Donald**. They are from Thomaston, Ga. Neither of them has any turning experience but both are eager to learn.

## Buffing

If you use the Beall buffing system, did you know?

- Tripoli is app. 900 grit
- White Diamond is app. 1500 grit.
- The optimal buffing speed is 900 rpm.

You can get a great finish on your projects with a buffing wheel and the proper techniques.

## Steve Russell's Lathe Talk

No, Steve Russell is not a Barnesville member, but he does host a woodturning web site with lots of good information. The direct link for his main educational library is as follows: <http://www.woodturningvideosplus.com/woodturning-education-articles.html>

## Classifieds

**For Sale:** Shopsmith - complete with drill press, lathe, table saw, wood chisels, etc., It needs cleaning up and is about 30 years old. \$500. Edna Garrett [elbg@comsouth.net](mailto:elbg@comsouth.net)

**For Sale:** Steel Tool Cart With Locking Drawer - List \$99.00; on sale \$74.99; asking \$65.00; Not beat up, only a few months old  
<http://www.harborfreight.com/large-steel-tool-cart-with-locking-drawer-90428.html>  
Charles Jackson 678-787-2861

**For Sale:** Rigid Radial Arm Saw - \$150.00 If someone will take this saw off my hands we will have room for two, maybe three more chairs at the meeting. Fred Morris 770-358-6500.

**For Sale:** Commercial Grade Biesemeyer 30-Inch Fence and Rail System (Model 36-B30): Includes front and back rails, guide tube, fence, extension table and legs. New in the box - never used. \$250. Steve Mellott 404-642-3222

If you have something you want to sell (or buy) contact Steve Mellott at [srmellott@hotmail.com](mailto:srmellott@hotmail.com)



## Board Members and Other Volunteers

Bill Bulloch – President [bullochw@bellsouth.net](mailto:bullochw@bellsouth.net)  
Fred Morris - Vice President [rfmorris@bellsouth.net](mailto:rfmorris@bellsouth.net)  
Chip Nasworthy – Treasurer [chipandsandra2116@yahoo.com](mailto:chipandsandra2116@yahoo.com)  
Ronnie Yates - Board member [theclearing@att.net](mailto:theclearing@att.net)  
Charles Woodall - Board member [shep1@att.net](mailto:shep1@att.net)  
Larry Parks - Board member [larry430@bellsouth.net](mailto:larry430@bellsouth.net)  
Ron Biffle – Librarian [ronbiffle@comcast.net](mailto:ronbiffle@comcast.net)  
Mel Williams – Video Camera Operator [mel.williams3@att.net](mailto:mel.williams3@att.net)  
Charles Jackson – Web Master [cbjackz@bellsouth.net](mailto:cbjackz@bellsouth.net)  
Steve Mellott – Newsletter Editor [smellott@hotmail.com](mailto:smellott@hotmail.com)

## Committee Members

### Activities

Ronnie Yates - Chair  
Don Yost  
Joe Patterson  
Lee Dale

### Membership

Hugh Patrick  
Chip Nasworthy  
Niall Mathieson  
\*Chair - TBA

### Library

Ron Biffle - Chair  
Lee Dale  
Dick Hyatt  
Charles Jackson

## Mentor List - (Call Bill to add your name to the list)

Name	City	Telephone
Bill Bulloch	Griffin	678-468-7014
Chip Nasworthy	Jackson	770-639-5250
Joe Patterson	Jackson	770-294-1607
Don Yost	Juliette	478-258-8477
Louie Bickett	Juliette	478-972-1207
Rocky Davis	Bonaire	478-987-1190
Lee Dale	Jackson	770-775-0895
Niall Mathieson	Barnesville	404-444-2671
Fred Morris	Barnesville	770-358-6500

## Newsletter Ideas and Articles

If you have ideas or articles for the next Newsletter, contact Steve Mellott at [smellott@hotmail.com](mailto:smellott@hotmail.com)

## Calendar of Upcoming Events

Apr 25	David Ellsworth all day workshop (waiting list only)
May 13	Monthly Meeting 7 p.m. at Fred's Mike Peace will be the featured demonstrator Turning Exchange -- bring your turning exchange in an unmarked bag
Jun 10	Monthly Meeting 7 p.m. at Fred's Don Geiger will be the featured demonstrator Tuesday Workshop – 3 p.m. Fred's Shop Theme: Hollowing Tools Demo
Jul 8	Monthly Meeting 7 p.m. at Fred's Steve Cook will be the featured demonstrator Club Challenge: Turn something from a 2 X 12.
Aug 12	Monthly meeting 7 p.m. at Fred's– Demonstrator to be announced
Aug 16	Saturday Workshop 9 a.m. until ?? at Fred's This is a hands-on workshop covering Spindle and Faceplate turning. Class will be limited.
Sep 9	Monthly Meeting 7 p.m. at Fred's Ray Keys will be the featured demonstrator Turning exchange – – bring your turning exchange in an unmarked bag
Sep 19-21	Turning Southern Style XX Woodturning Symposium <a href="http://events.r20.constantcontact.com/register/event?llr=9atcwcjab&amp;oeidk=a07e765b6w5078a4c7c">http://events.r20.constantcontact.com/register/event?llr=9atcwcjab&amp;oeidk=a07e765b6w5078a4c7c</a>
Oct 2-12	Georgia National Fair
Oct 14	Monthly meeting 7 p.m. at Fred's – Demonstrator to be announced Tuesday workshop 3 to 5 p.m. at Fred's – Texturing demo
Nov 11	Monthly meeting 7 p.m. at Fred's – – Demonstrator to be announced Club Challenge – Turn a piece of Fruit (to be raffled at the Christmas Party)
Dec 9	CHRISTMAS PARTY – gift exchange

